



One Point Wireless Suite

Design and Manage Trusted,
High Value Wireless Networks



A Revolution in Ease-of-Use

DELIVERING VALUE AND AGILITY

The One Point Wireless Suite leverages Motorola's deep wireless expertise in helping customers design better networks, deploy them faster and more cost-effectively, and comprehensively manage them for maximum availability and security. The One Point Wireless Suite helps ensure that you capture maximum value and flexibility from your Motorola wireless network. Trust Motorola solutions to give you wireless agility through networks that are more reliable, more secure and more cost effective than their legacy wired counterparts.

Networks today are evolving more and more towards a primarily wireless architecture. Because the performance of wireless networks depends on many different factors, the process of network design and management used to be complicated and ponderous and did not always yield the desired results. The Motorola One Point Wireless Suite has changed all that. The suite is an innovative set of software solutions designed to work together to make the design, deployment, management and security of indoor wireless LAN and outdoor wireless broadband networks something they've never been before. Simple.

A New Holistic Approach

Advanced prediction engines in the suite's design tools leverage Motorola's deep expertise in wireless technology and take the guesswork out of designing each network layer for optimal coverage, capacity and performance. With innovative unified, map-based network visualizations, the One Point Wireless Suite lets you see every network node at its actual location and manage your entire wireless network from one screen — including indoor and outdoor access, distribution and backhaul layers.

Enabling Streamlined Deployment

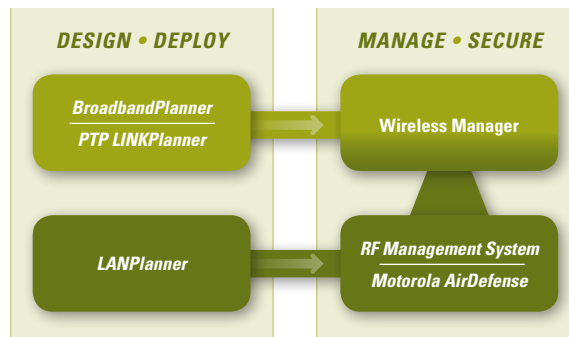
Historically, deploying a wireless network has been a time consuming effort that included unpredictable

and costly field-based activities. Not any more. Portable enough to run on a laptop in the field, Motorola design tools give installers all the information they need and allow unexpected challenges to be quickly addressed by adjusting the network design on the fly. The One Point Wireless Suite helps ensure the right coverage, capacity and performance for each device and application while reducing unplanned deployment and capital equipment costs.

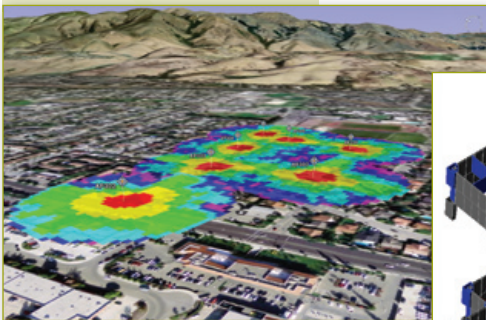
One Point Design and Deployment Solutions

The One Point Suite includes three powerful design/deployment solutions:

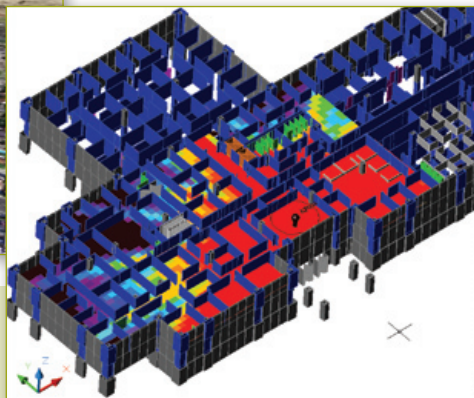
- **BroadbandPlanner** is a powerful and efficient software solution that helps you propose, design, deploy and measure Point-to-Multipoint and Mesh Wide Area Network systems. The tool's advanced RF modeling engine automates the process of determining optimum equipment placement while taking into consideration the impact of the physical environment on the wireless signals. BroadbandPlanner offers integration with Google Earth and streamlined network measurement and verification. It makes designing and optimizing networks easy with signal strength heatmaps, optimal urban-canyon relay locations and terrain obstruction path profiles.
- **PTP LINKPlanner** simplifies design of Point-to-Point links by accurately predicting achievable data rates, taking into account terrain profile and obstructions between links, antenna heights and antenna type/size. Through integration with Google Earth™, PTP LINKPlanner allows for exceptional real-world link path visualization of single or multiple link designs. Additionally, you can create "what if" scenarios while determining important performance measurements such as link reliability, throughput and path loss.
- **LANPlanner** uses an intuitive 3D interface with multi-floor building coverage visualizations and an advanced RF performance modeling engine to help customers design and install 802.11 a/b/g/n wireless LANs that deliver maximum performance at minimum cost. This powerful tool can model not only signal strength and interference but also throughput for 802.11n MIMO access points. LANPlanner makes it easy to see how a planned network will perform for applications like web surfing, file downloads, FTP file transfers, video conferencing, wireless VoIP or location based triangulation with specialized application coverage maps that integrate RSSI, AP coverage overlap, SINR, utilization, and data rate information into an easy-to-understand good/bad heat-map view. LANPlanner designs can be transferred into RFMS to improve coverage visualizations.



BroadbandPlanner shows sophisticated Mesh and Point-to-Multipoint coverage predictions in Google Earth maps



LANPlanner calculates multi-floor 3D throughput predictions



Trusted Networking: Managing for Maximum Reliability and Security

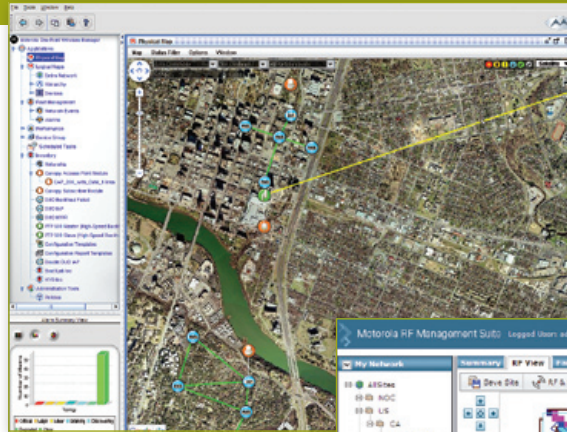
WIRELESS MANAGER

Wireless Manager is Motorola's powerful, flexible and scalable deployment and management solution that helps organizations maximize network reliability and uptime. Its breakthrough map-based visualization capabilities use embedded Google maps, and combine with advanced configuration, provisioning, alerting and reporting features. Network managers can holistically monitor and manage their Motorola Mesh, Point-to-Point, Point-to-Multipoint, WLAN sites and other SNMP enable devices from one live Google map view. Wireless Manager features one-click access to the RF Management System and allows operators to view PTP LINKPlanner and BroadbandPlanner network designs in a Google Earth view. This helps operators more quickly localize, diagnose and correct network issues, improving overall performance and availability.

Wireless Manager Capabilities

Wireless Manager provides a single consolidated network view that delivers new levels of system visibility while reducing training time and costs.

- **Live Google Map Visualization.** Wireless Manager visually shows relationships between network layers and provides detailed Google map visualizations of network devices and connectivity on both macro and micro levels via device search, local search, street view, device drag and drop and path profiler. You can instantly view estimated network coverage and real-time link performance data.
- **Auto Discovery.** The solution automatically discovers new equipment in the network. This functionality enables faster network deployment and setup, while helping to reduce errors and significantly lower deployment costs.
- **Template-Based Configuration.** By providing streamlined provisioning via the application of template-based device configuration, Wireless Manager makes it simple to create your own custom-defined configuration templates and apply them to devices automatically.
- **Unified Network Performance.** Through real-time network polling, the solution determines the current status of all network elements, identifies issues and generates alerts according to customized user parameters. You can easily see the causes and effects of issues in both high-level and minute detail, from a full network overview to detailed information on individual devices. You can also just as easily troubleshoot and resolve these issues.

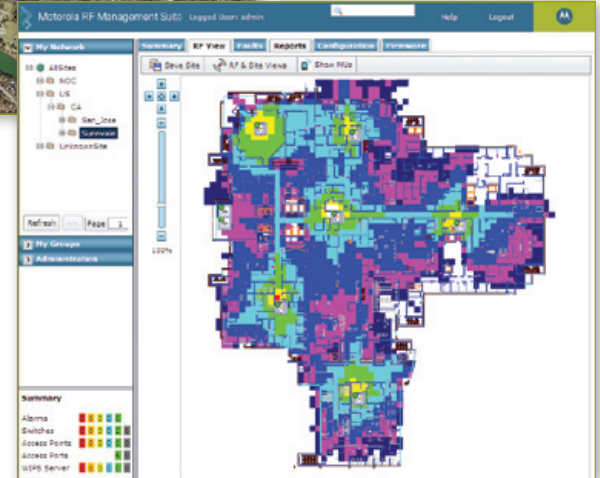


Wireless Manager shows a map-based view of all network layers with realtime performance

RFMS shows heatmaps of realtime WLAN coverage

RF MANAGEMENT SYSTEM

The RF Management System is a robust and scalable WLAN manager for both Motorola and other WLAN equipment. It provides alerts, configuration, customized graphs for key statistics, planned versus discovered device lists, heat maps of coverage, channel map visualization and the ability to recognize interference in multi-floor environments. WLAN sites managed by the Motorola RF Management System (RFMS) are displayed in Wireless Manager, along with real-time performance metrics and alert status. Easy one-click access is provided from the map view to the RFMS for troubleshooting, configuration and monitoring of WLANs down to the access point level. RFMS provides aggregate alert/status from, and easy one-click access to, industry-leading Motorola AirDefense solutions.



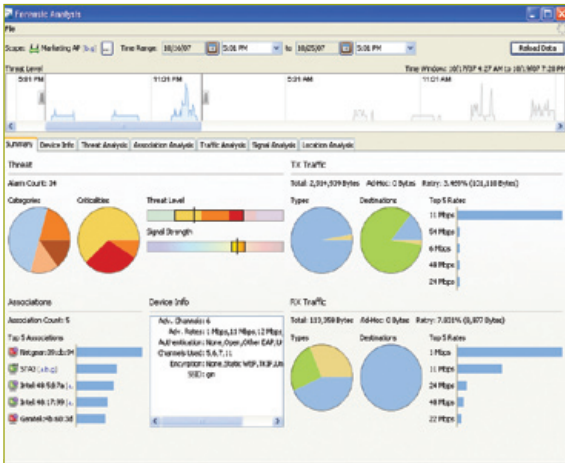
NETWORK VISUALIZATION WITH GOOGLE MAPS

Motorola Wireless Manager overlays network elements onto a sophisticated real-time embedded Google map. This allows you to visualize and analyze a wide range of crucial information including connectivity between nodes, link quality, range, and device and network availability. Graphical representations of data help you quickly determine network status, identify problems and determine the severity of impact on the network and end users. In this map-based view, you can scale and pan to view an entire city or a specific area. Satellite, terrain, roadmap or hybrid views can be selected and intuitive, context-sensitive bubbles appear over the map which give quick access to key management functions.

MOTOROLA AIRDEFENSE SOLUTIONS

- **Intrusion Protection.** It's essential to guard your network against unauthorized access. Motorola AirDefense solutions provide 24x7 monitoring of your wireless LAN, safeguarding proprietary information and enabling compliance with government regulations for protection of personal and financial information such as health and credit card data. Motorola AirDefense solutions allow you to identify hackers, attacks and network vulnerabilities, and to instantly terminate the connection to any rogue device.

The Value of Suite Synergy



Motorola AirDefense solution offers proactive WLAN threat detection and forensics

The Motorola One Point Wireless Suite features some of the most powerful network design, management and security solutions in the industry. Now, through one suite of innovative applications, you can easily take control of your indoor and outdoor wireless network and make sure it delivers the full value of mobility, security and reliability. One Point Wireless Suite advantages include:

Design and Deployment Advantages

- **Better Design.** Optimal network designs deliver high performance and QoS for data, video and voice while minimizing capital expenditures and labor costs.
- **Faster Deployment.** Installation guides, verification plans and automated performance measurement tools help streamline deployment. Design tools are portable enough for use in the field and designs can be leveraged by management tools for smoother hand-off to configuration and full operation.

Motorola delivers seamless connectivity that puts real-time information in the hands of users, giving customers the agility they need to grow their business or better protect and serve the public. Working seamlessly together with its world-class devices, Motorola's unrivaled wireless network solutions include indoor WLAN, outdoor wireless mesh, point-to-multipoint, point-to-point networks and voice over WLAN solutions. Combined with powerful software for wireless network design, security, management and troubleshooting, Motorola's solutions deliver trusted networking and anywhere access to organizations across the globe.

- **Troubleshooting.** The same Wi-Fi sensors that monitor the network can also be used to troubleshoot problems by simulating client devices and testing the connection from client back in to the application server. This simplifies and accelerates problem resolution at the level-one help desk stage, as well as saving time by correctly escalating larger problems to the right expert team.

Network Management and Security Advantages

- **Unified, Map-based View.** The Wireless Manager and RFMS sophisticated map-based visualization capabilities streamline network management by providing easy-to-understand graphical representations of your most important connectivity and performance data. You can see one view of your entire indoor/outdoor network on a map or floor plan.
- **Enhanced Security.** Motorola AirDefense solutions help actively safeguard your WLAN access network from intrusion and compromise. The system also manages embedded hardware WPA2 and AES security features.
- **Complete Reporting.** Wireless Manager and RFMS generate pre-defined and custom reports through their ability to collect and chart a wide range of statistics, allowing the viewing of a network health check at any point in time.
- **Interoperability.** The solution suite provides a north-bound SNMP interface that supports streamlined integration with third-party network management tools and systems.

As an acknowledged leader in integrating wireless technologies, Motorola offers over 80 years of exceptional expertise in designing, deploying and managing wireless networks around the world. Our solutions are empowering stronger, more effective networks for a broad range of customers, including municipal public safety and public works departments, schools and educational institutions, medical centers and healthcare systems, and commercial networks for service providers of all sizes.



Motorola, Inc. 1301 E. Algonquin Road, Schaumburg, Illinois 60196 U.S.A. www.motorola.com/onepoint

MOTOROLA and the stylized M Logo are registered in the U.S. Patent and Trademark Office. All other products or service names are the property of their registered owners.
© Motorola, Inc. 2009